



Anchor Danly

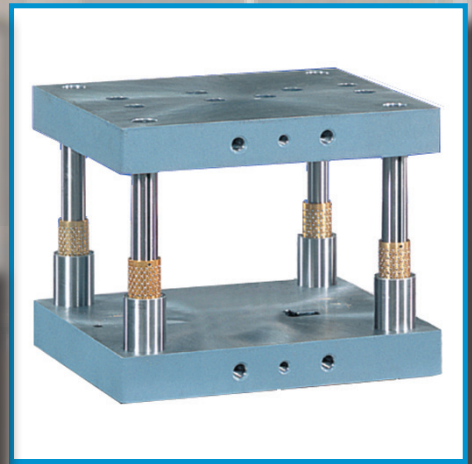
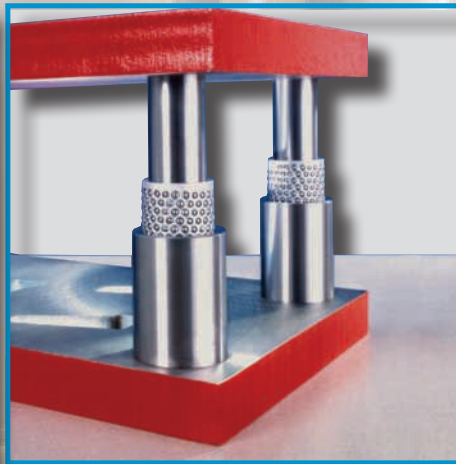
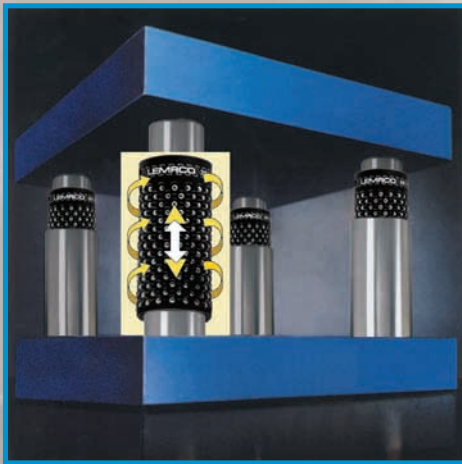
EXPRESS DIE SET CAPABILITIES

With the expanded capabilities on the Express Manufacturing Cell in our Ithaca, MI facility, Anchor Danly now offers tolerance grinding in addition to the "clean up grind" that has always been standard in this cell. With tighter tolerance grinds up to ± 0.015 ", this will allow for more efficient grinding with quicker deliveries and less costs involved.

ANCHOR DANLY EXPRESS CELL PARAMETERS	
Length	59"
Width	29"
Weight	2,000 lbs. per plate
Lift Holes	Up to 1" diameter
Component Size	Up to 3" diameter
Burnouts	Yes
Delivery	Best in Class
Tolerance Grinding	Up to ± 0.015 "

Designed to deliver the ultimate in quality and performance, Anchor Danly die sets are manufactured to high standards with your use in mind.

Each ball bearing and plain bearing die set is machined and assembled with guide posts and bushings of your specifications.



Contact us today for information about this or any other Die Sets, Plate and Fabrications needs.



Anchor Danly

255 Industrial Parkway
Ithaca, MI 48847

www.anchor danly.com
Email: quotes@anchordanly.com

Toll Free: (800) 243-2659
Fax: (800) 833-2659