



# Anchor Danly

## Die Set Parallels



### MATERIALS

- A36 / 1020 mill-certified steel is standard
- Other materials available

### OPTIONS

- Torch-cut or Machined Ramps
- Machined Slots and/or Clamps
- Fully Machined for Dowel, SHCS, Taps, Slug Drops, & Gas or Die Spring Holes
- Mounted to your Die Set



### PROCESSES

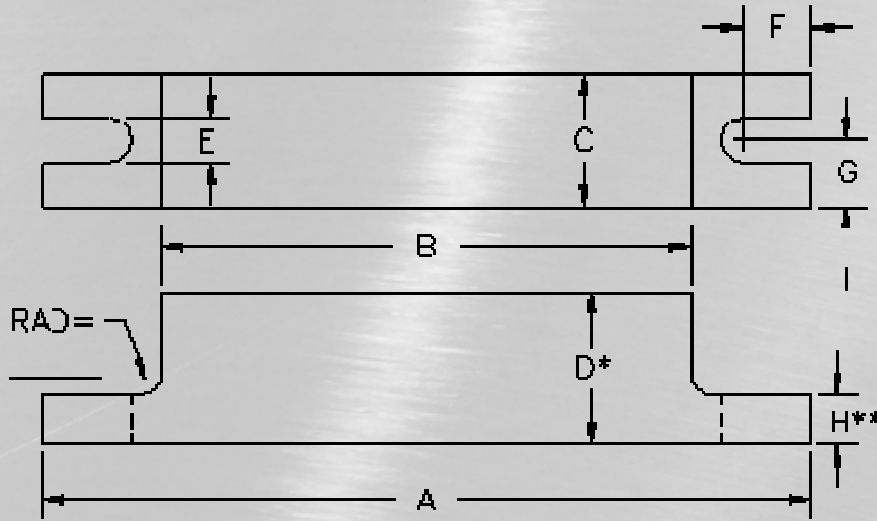
- Flame, Plasma, or Waterjet Cutting
- Stress Relieving - Vibratory or Thermal
- Blanchard Grinding or Machined Finish
- CNC machining
- Inspection

Turning Steel into  
Partnerships





# Anchor Danly



Customer: \_\_\_\_\_  
 Required Delivery: \_\_\_\_\_

PO # \_\_\_\_\_  
 Job # \_\_\_\_\_

Detail #	Qty	A	B	C	D	E	F	G	H	Remarks

Grind Details with Common "D" Dimension to: \_\_\_\_\_ Size or \_\_\_\_\_ Clean-up  
 If grinding to size, "D" finish size is: \_\_\_\_\_ +/- \_\_\_\_\_

"H" (clamp height) - machine to size? \_\_\_\_\_ YES \_\_\_\_\_ NO  
 If no, the top-side will be a torch-cut finish  
 If "H" is to be machined, size/tolerance: \_\_\_\_\_ +/- \_\_\_\_\_

<b>Cambridge, ON, Canada</b> P: 519-740-3060 / 800-265-7842 F: 519-740-8213 <a href="mailto:cooeng@anchordanly.com">cooeng@anchordanly.com</a>	<b>Montreal, QC, Canada</b> P: 514-525-5560 / 800-263-5560 F: 514-525-7835 <a href="mailto:moneng@anchordanly.com">moneng@anchordanly.com</a>	<b>Tilbury, ON, Canada</b> P: 800-265-5295 / 800-265-5295 F: 519-682-3616 <a href="mailto:releng@anchordanly.com">releng@anchordanly.com</a>	<b>Windsor, ON, Canada</b> P: 519-966-4431 / 800-265-5007 F: 519-972-6862 <a href="mailto:wineng@anchordanly.com">wineng@anchordanly.com</a>
---	--	---	---

<b>Detroit, MI USA</b> P: 248-547-5910 / 800-543-3790 F: 248-547-5918 / 800-963-0400 <a href="mailto:wineng@anchordanly.com">wineng@anchordanly.com</a>	<b>Ithaca, MI USA</b> P: 989-875-5400 / 800-243-2659 F: 989-875-3719 <a href="mailto:quotes@anchordanly.com">quotes@anchordanly.com</a>	<b>Los Angeles, CA USA</b> P: 800-243-2659 F: 800-833-2659 <a href="mailto:LAquotes@anchordanly.com">LAquotes@anchordanly.com</a>
--	--	--